

Name: _____

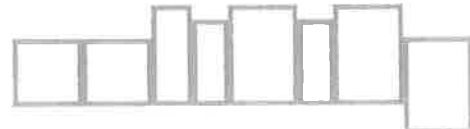
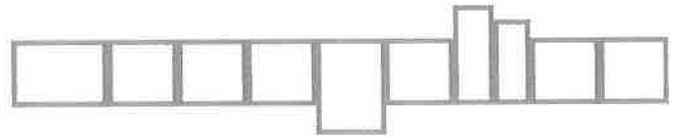
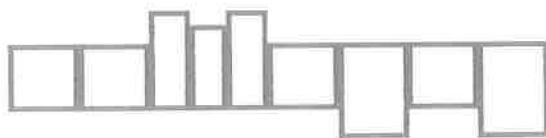
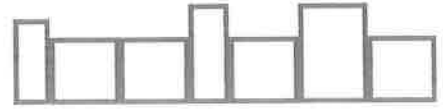
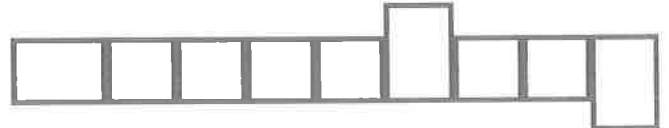
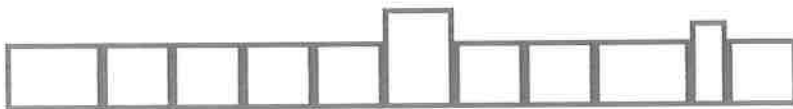
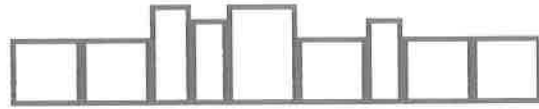
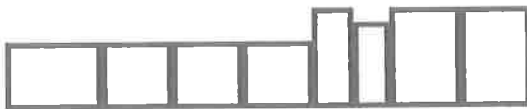
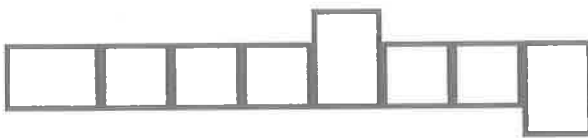
Number: _____

MONDAY NIGHT HOMEWORK

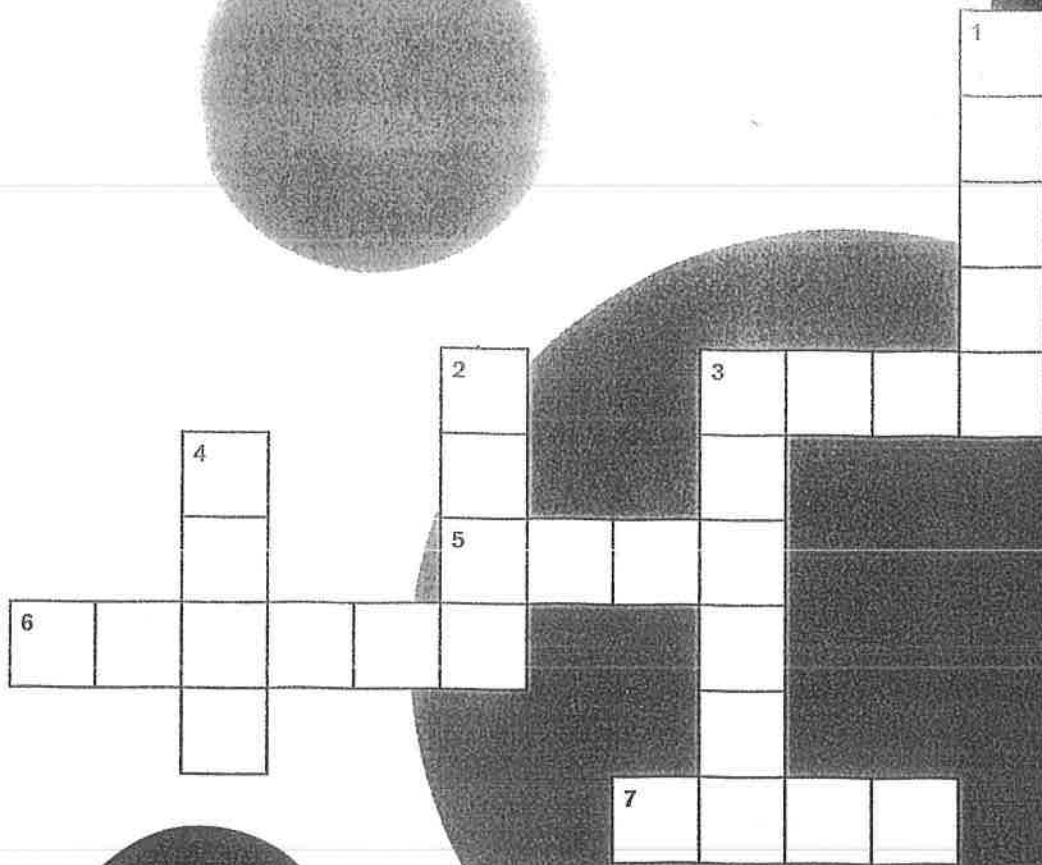
Greek and Latin Roots Spelling

This week's Greek or Latin roots: *sol* – alone
mon – only one

desolate isolate sole solidify solitaire soloist monarch
monolith monopolize monotony desolation monochromatic
monotonous soliloquy monastery



PUZZLE
16



Across

- 3 pull : wagon :: _____ : swing
- 5 red : _____ :: hare : hair
- 6 _____ : ten :: thirteen : twelve
- 7 stop : go :: _____ : strong

Down

- 1 dinner : evening :: _____ : noon
- 2 farm : _____ :: ranch : corral
- 3 canoe : _____ :: rowboat : oar
- 4 they : go :: she : _____

WEDNESDAY NIGHT HOMEWORK

Speller's Choice

Choose one of the activities below. Please choose a different activity each week.

- Wordle:** Go to www.wordle.net to create a word cloud using ALL your spelling words. Print it out and attach it to your spelling packet.
- Caption Words:** Cut out a picture from a newspaper or magazine and use spelling words to write a story about the picture.
- Cheer Words:** Come up with a cheer using at least 10 of this week's spelling words. You turn in the script or turn in the script and perform it for the class!!
- Target Words:** Write all of your spelling words and go over the tricky parts of each word with a pen or marker.

